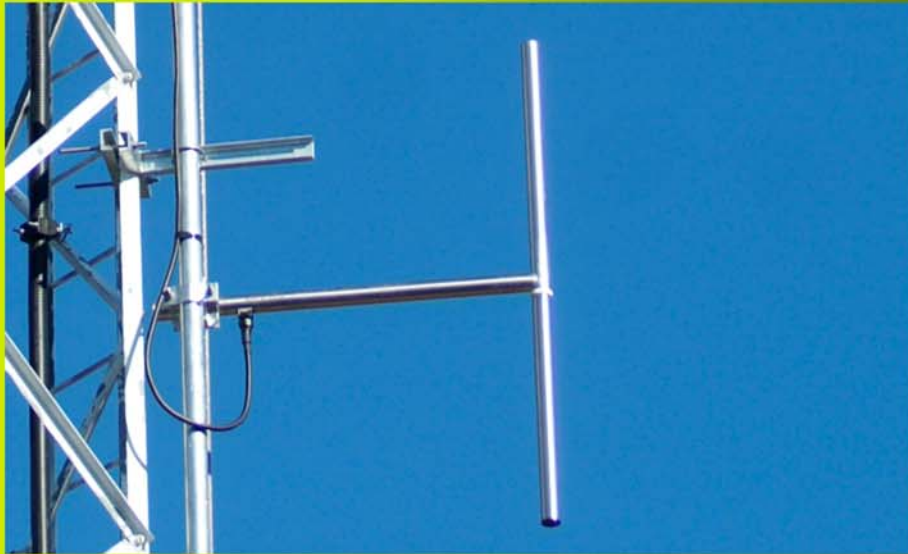


SAVO

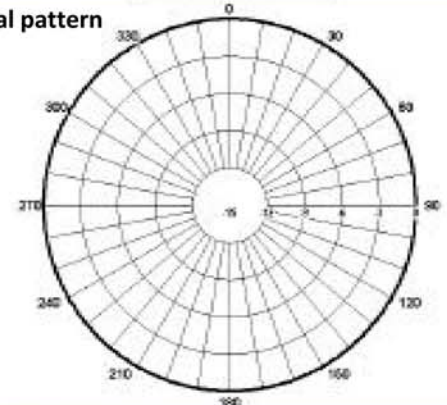


Model	Bays	Gain (dBi)	Vertical beamwidth	Length	Power (KW)
SAVO2D	2	5	36°	3m	4,6
SAVO4D	4	8	17°	9m	9,2
SAVO6D	6	10	11,4°	15m	13,8
SAVO8D	8	11	8,5°	21m	18,4
SAVO10D	10	12	7°	27m	23

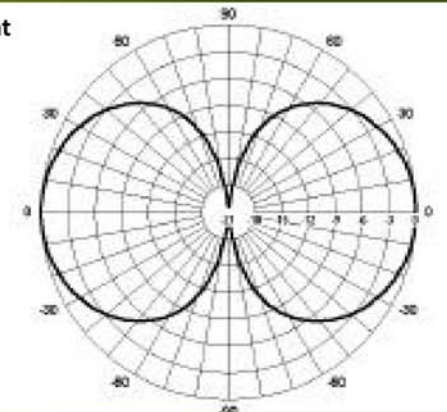
Technical Specification

Frequency	87.5 - 108MHz
Polarization	Linear-Vertical
H Beamwidth	80°
V Beamwidth	Omni ex-tower influence
Gain	2.15 dBi (ref. to half wave dipole).
VSWR	<1.3:1 Broadband
Impedance	50Ω
Power Handling	2.500W
Connectors	DIN 7/16"
Lightning Protection	DC Grounded
Length	1.035mm.
Width	51mm.
Height	1.355mm.
Weight	9,5Kg ref. stainless steel.
Mounting	Standard clamp.
Wind Load	32Kg @ 150Km/h.
Max. wind velocity	200Km/h.
Materials	Dipole: stainless steel. Internal: Alluminium, copper. Hardware mounting: steel galvanized. Insulator: PTFE.

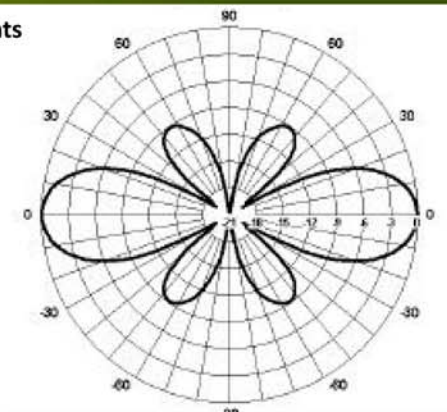
Horizontal pattern



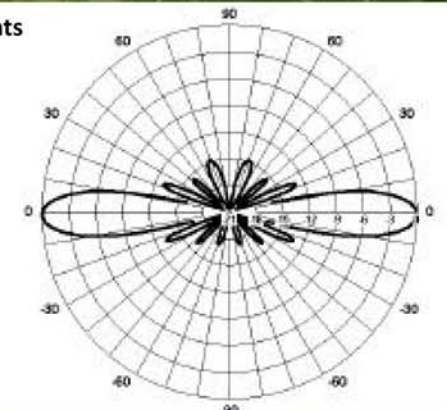
1 element



2 elements



4 elements



Features and specifications are subject to change without notice.



ISO 9001
BUREAU VERITAS
Certification

